

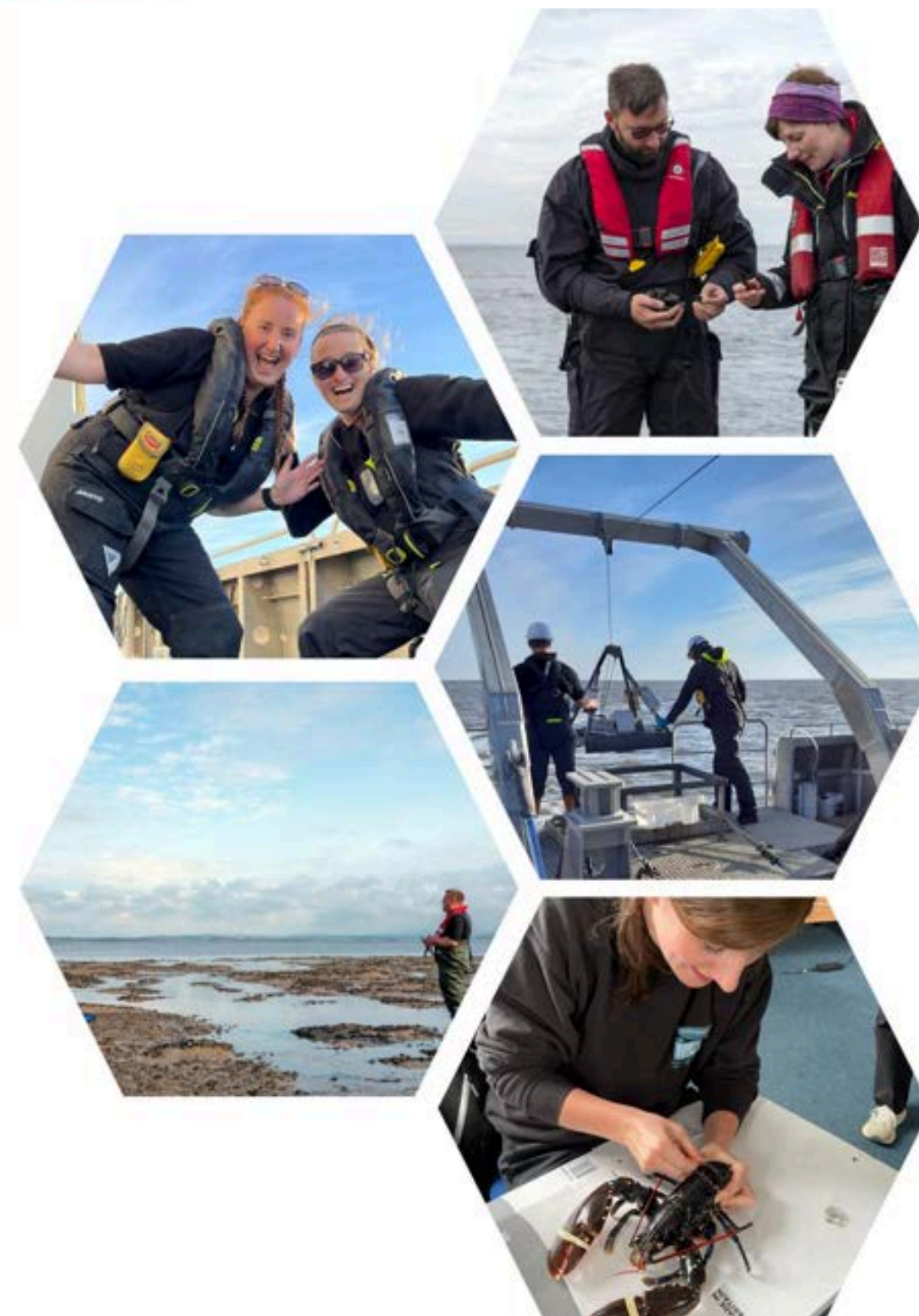


# Spotlight on Science

Achievements from  
2024/25



Inshore Fisheries and  
Conservation Authority



# SCIENCE SURVEYS

2024/25



## COCKLES

The results of consultation run in 23/24 recommended a trial July 1<sup>st</sup> fishery. Officers undertook surveys in April. Stocks were not sufficient, surveys were again undertaken in July.

**15** Cockles surveys completed

16,142



Cockles sampled in annual 2024/25 surveys

8,570



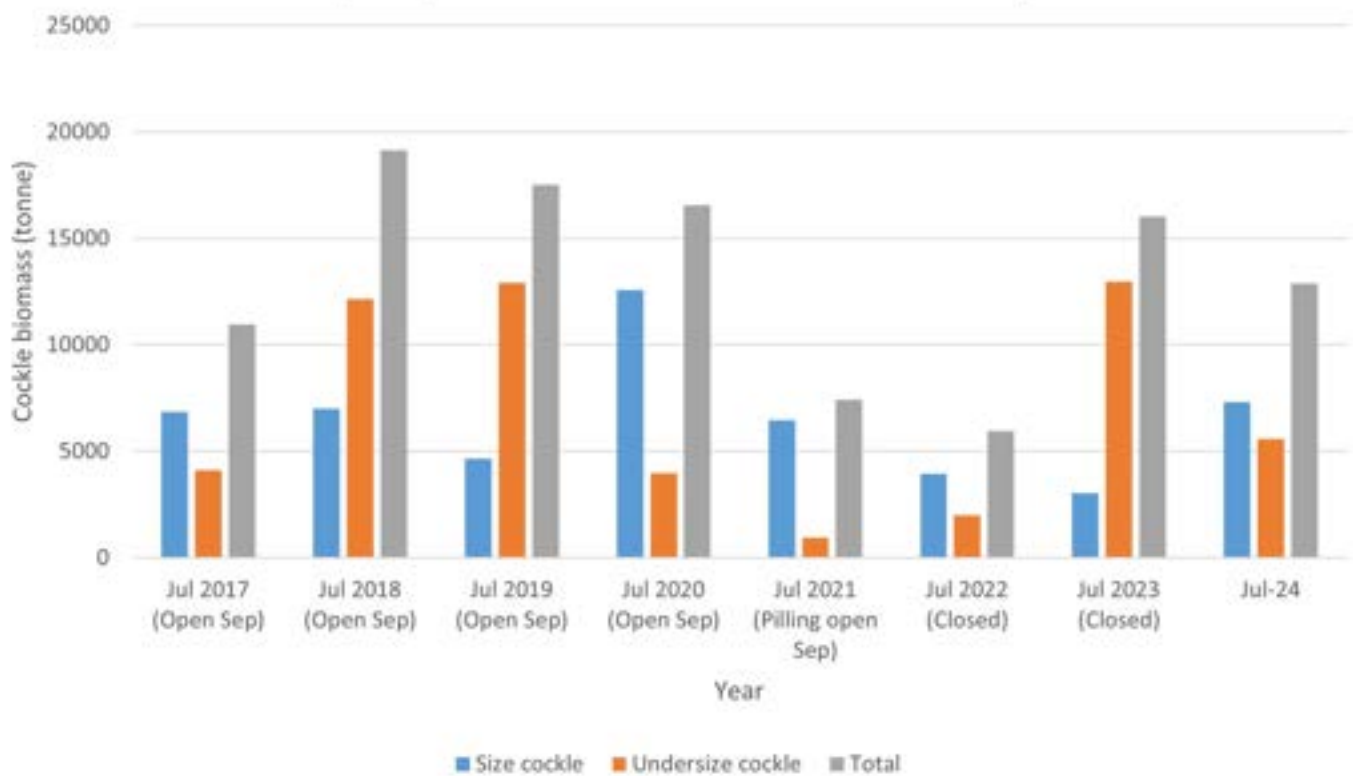
Hectares of intertidal area surveyed (twice!)

640



Sample points across the North Western District (twice!)

a) Yearly biomass of cockle in Morecambe Bay



**15**

Associated survey reports



**5**

HRAs



**1**

Industry consultation



**11**

Officers routine mapping of fishery activities to build an understanding of fishery impacts.





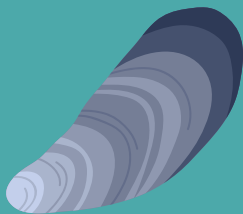
# SCIENCE SURVEYS

2024/25

## MUSSELS

This year officers altered the survey parameters to gain more coverage, map out a wider size frequency of mussel, and re-mapped all historical data into QGIS for future use.

2,234



Mussels sampled in annual 2024 surveys

238

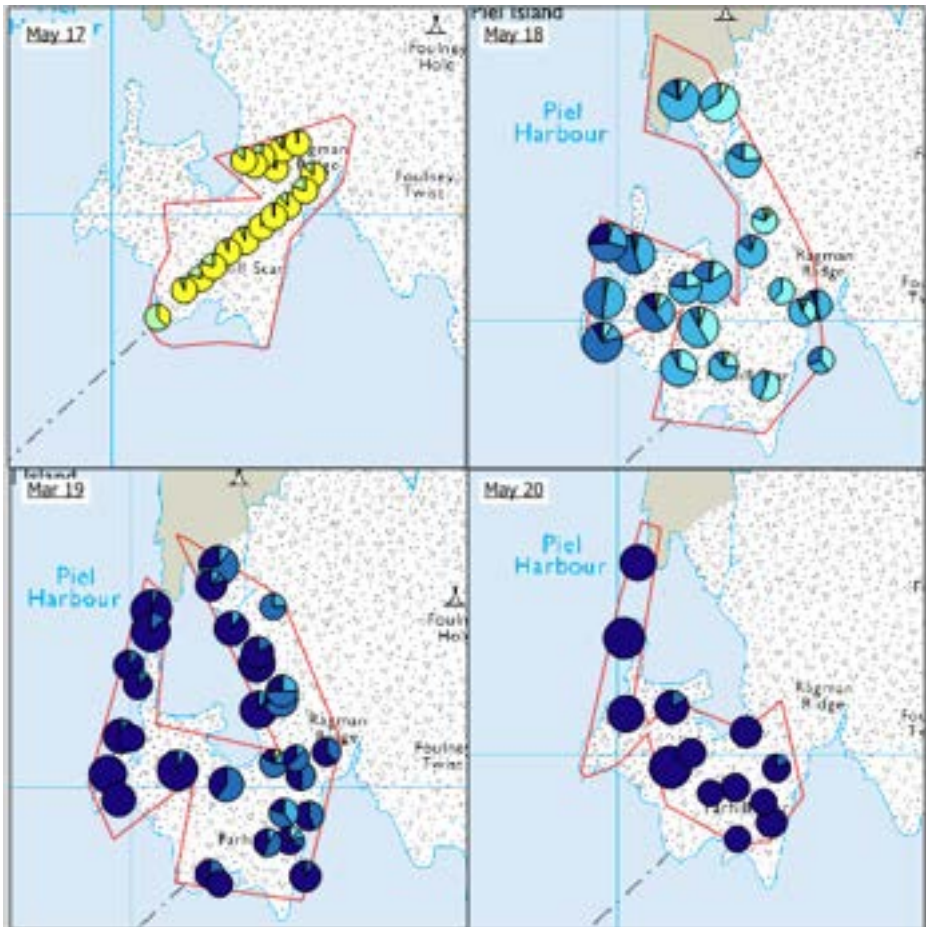


Hectares of intertidal area surveyed

+30



Officer days survey and inspecting mussel

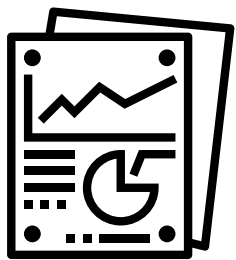


6

Dutch Wand surveys and associated survey reports



Drone flights and data collection



>12

Inspections and associated reports



18

Historical surveys re-mapped



# SCIENCE SURVEYS

2024/25

23

Grab samples taken

5

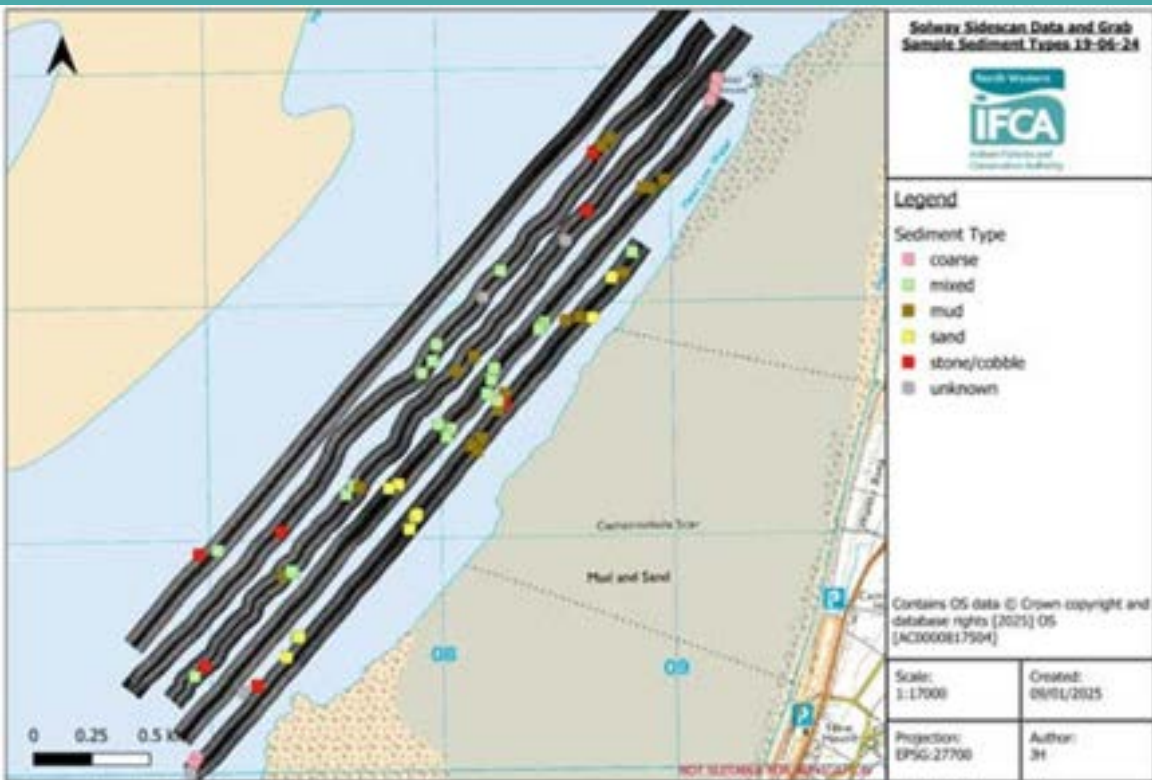
3 km transects

1

Assessment

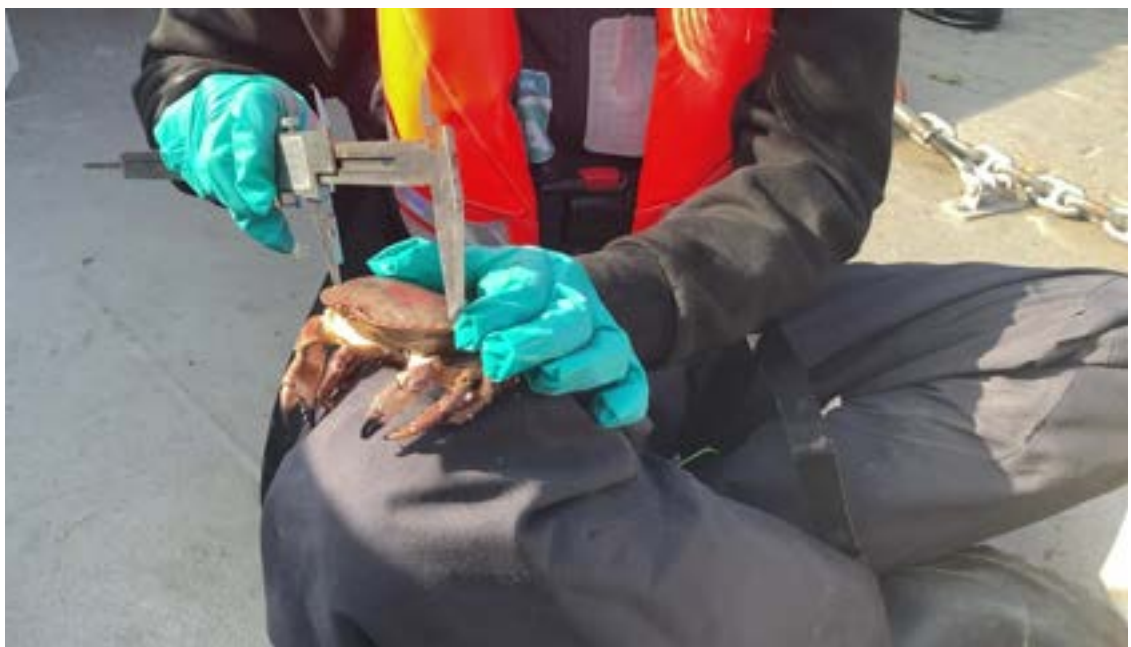
This year we ran a side scan survey in the Solway to identify the presence of mussel and whether an fishery could be supported.

## SIDESCAN



Jon

## ALLONBY BAY



We carried out the first set of potting surveys in the Allonby Bay HPMA

9



Days of survey

720



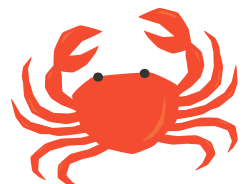
Pots set and hauled

32



Lobsters tagged

292



Crabs sampled



Team

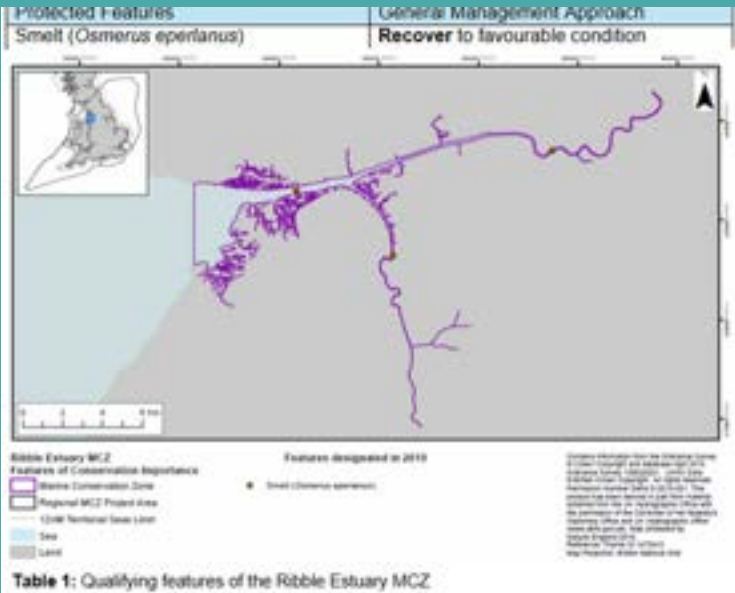




## MARINE CONSERVATION ZONES

- ✓ RIBBLE
- ✓ WYRE AND LUNE
- ✓ CUMBRIA COAST
- ✓ SOLWAY

The outstanding assessments for the Districts MCZs have had first drafts completed



Lucy  
Robin

## FISHING ACTIVITY DATA

Reviewing the fishing data needed for MCZ assessments lead to a wider project on the collation and use of fisheries activity data collected by officers.



# FISHERIES

2024/25



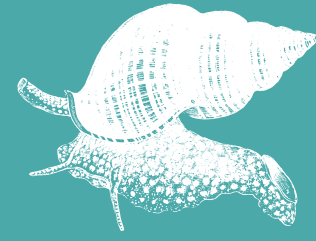
## WHELKS

The whelk MCRS project was completed along with a recommendation to the Authority for a 65 mm length MCRS.



Associated report and presentation to Authority

1848



Whelks analysed

11

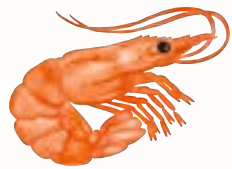


Whelks samples provided from across the district



Gemma

## SHRIMPS



An investigation into the NW shrimp fishery and the possible causes for decline was completed for the first time in 20 years

1



Industry research questionnaire

15



Responses from across the district



Associated report and presentation to Authority



Lucy





Science team also respond to consultation requests on national infrastructure projects and dispensations for survey work

32



Consultation responses

6



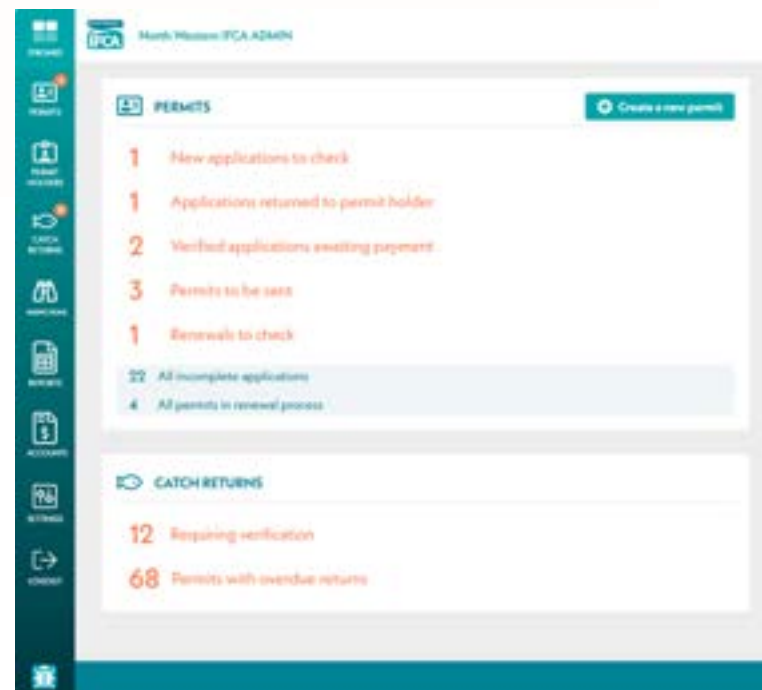
Dispensations provided

## CONSULTATIONS & DISPENSATIONS



Gemma  
Lucy

## PERMIT DATABASE AND BYELAW 4 RETURNS



This year we focused on developing the permit database with regards to Byelaw 4 returns, engaging with stakeholders and creating onboarding materials

8



Training material videos created

22



Stakeholders contacts and assisted



Accurate returns form developed



Gemma

# EXTRAS



## Green officer



## Power boat training



All science officers  
achieved powerboat  
level 2

## Data standards



Reviewing and  
updating  
internal  
datasets

## Returns data



Providing  
compliance  
returns data

## Student placement

Lancaster  
University



Hosted two students  
for 6 weeks

## Cefas training



**Cefas**



Training in responding  
to incidents for crab  
and lobster

**ALL THE  
EXTRAS!**

2024/25

## Bird ID training



Attending bird ID  
training in Walney and  
developing inhouse  
training materials

## Policies



Drafting new policies  
and procedures

## External meetings



TAG, Solway Firth  
Partnership, Mersey  
Tidal, Whelk Working  
Group etc.

**Two new science  
team members!**



 Team



