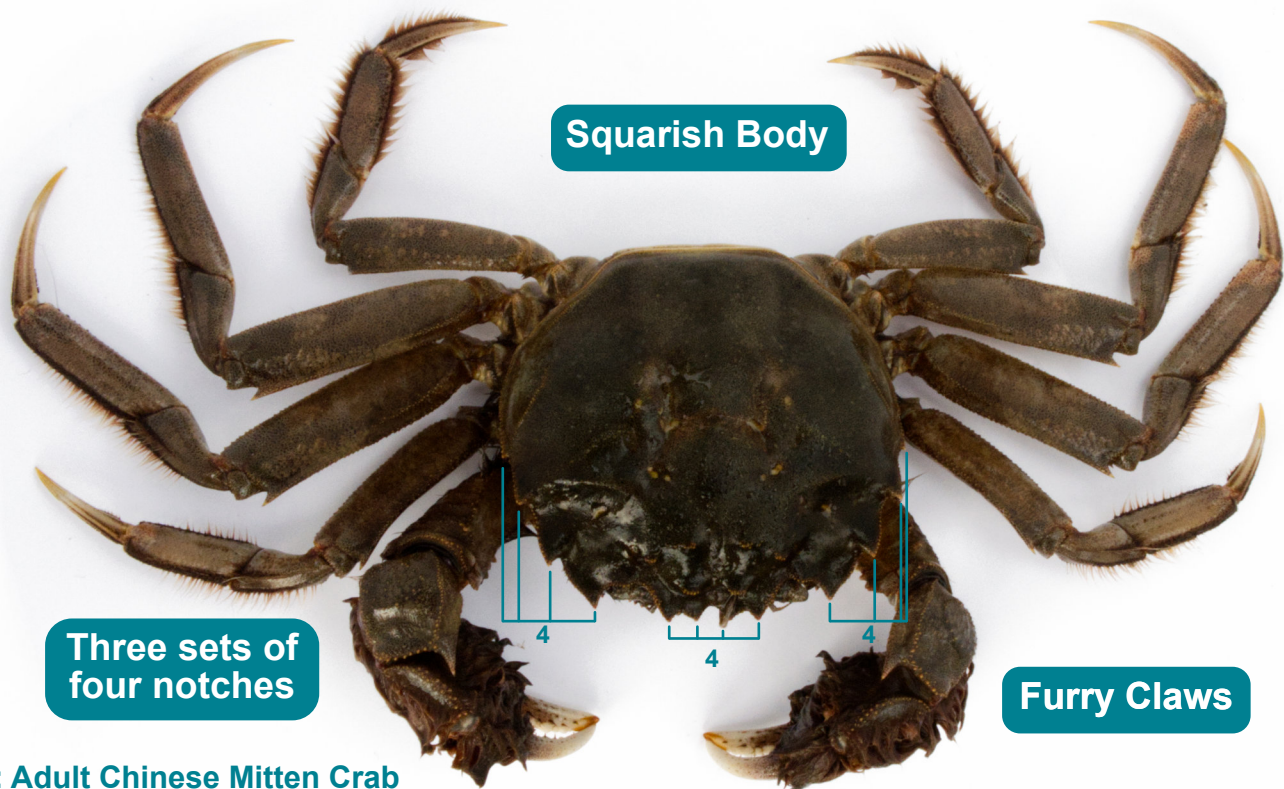


# INVASIVE SPECIES

## Chinese Mitten Crab



Pictured: Adult Chinese Mitten Crab

The invasive Chinese Mitten Crab has been found in Morecambe Bay. They cause damage to river walls through burrowing and are a risk to infrastructure and biodiversity.

## If you find a Chinese Mitten Crab

### Retain

Isolate the crab immediately, take care with egg carrying females not to shed any eggs. Keep the crab alive in an appropriate container making sure it cannot escape.

### Record

Record the location that you caught the crab. (OS Grid Reference, Latitude & Longitude or What3Words reference are appreciated where possible).

### Report

Contact us by completing the online form at [nw-ifca.gov.uk/CMC](http://nw-ifca.gov.uk/CMC) or by telephone on 01524 727970 (option 3). An officer will arrange to collect the crab or advise on its disposal (office hours only).