

North Western Inshore Fisheries and Conservation Authority (NWIFCA)

Annual Plan April 2011 – April 2012 Consultation Draft

Part 1

Establishment of the NWIFCA; Duties and performance monitoring

1. **Part 2** of the plan, (page 7ff) is the Action Plan setting out the work programme for the NWIFCA in 2011-12. The action plan is structured around the evaluation and monitoring framework provided for all the IFCA by the Defra implementation team.

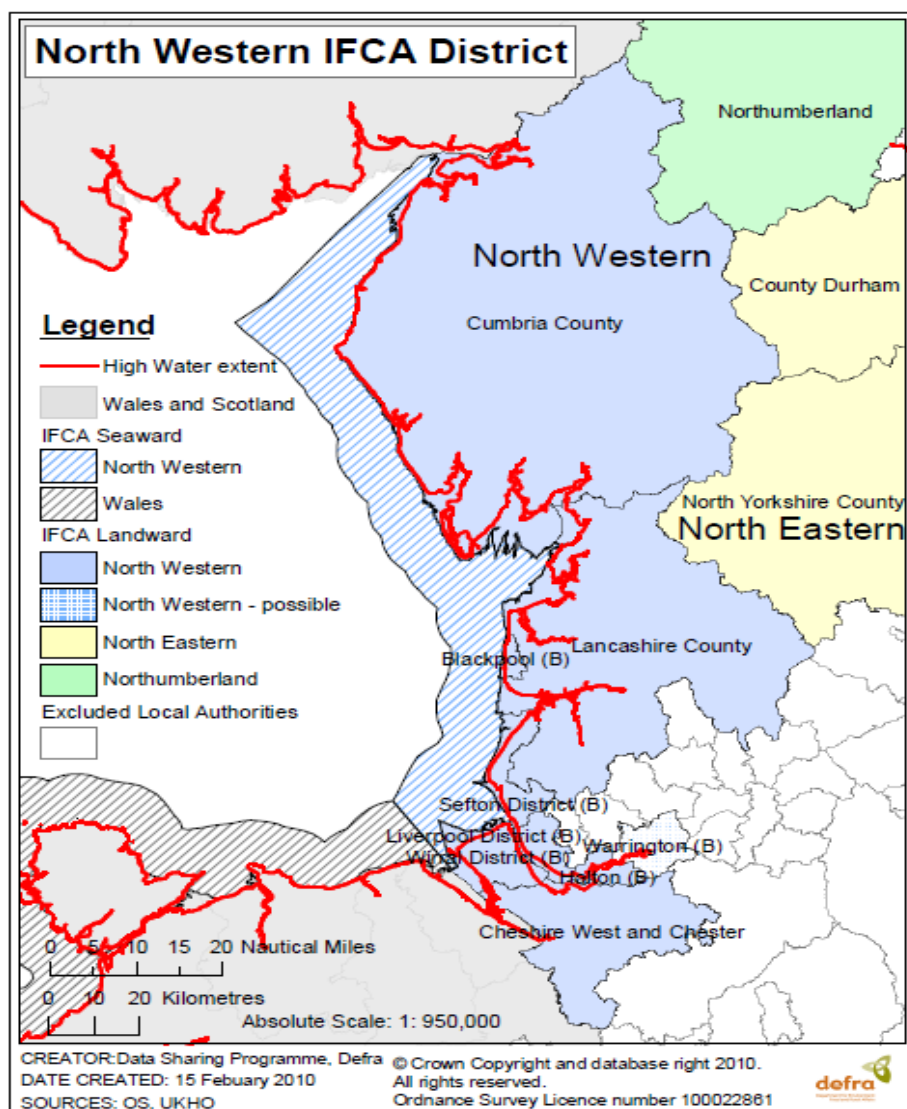


Fig. 1. The boundaries of the NWIFCA District.

Audience and Purpose

2. The Marine and Coastal Access Act (MACA sections 177-8) requires each IFCA to publish by 1 April each year, an annual plan for the coming year. The plan should meet minimum standards as set out in Defra guidance. The plan should set out the Authority's objectives and priorities. It will be used by the Secretary of State to measure each IFCA's performance, accountability and value for money (MACA s183).

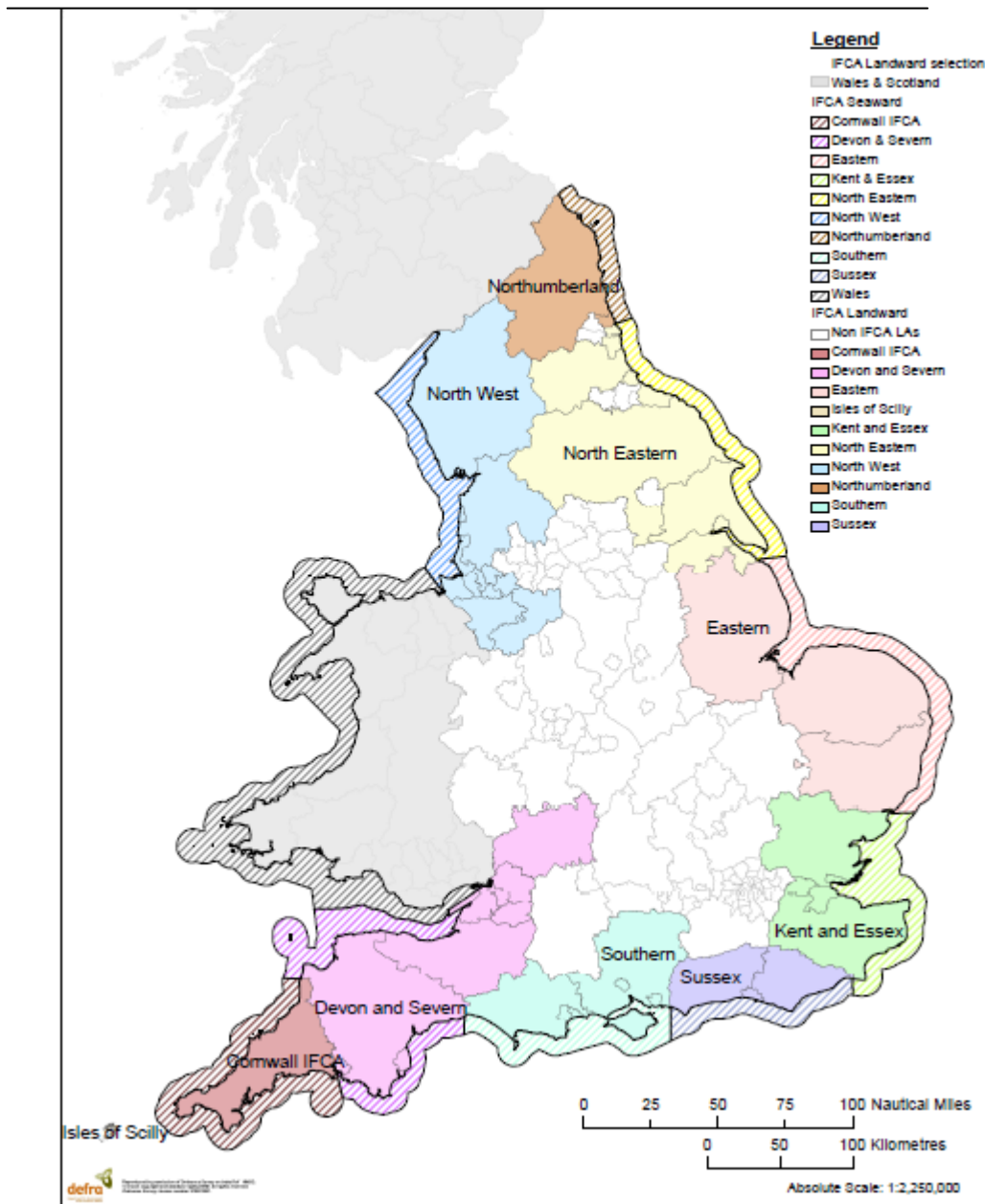


Fig. 2. The 10 IFCA Districts

3. The plan should inform stakeholders and the general public how the NWIFCA will carry out its duties and what they can expect the Authority to deliver. The plan will define the known issues facing the NWIFCA in the coming year, how these issues will be tackled and how interventions will be monitored and evaluated to see if the desired objectives have been achieved.
4. The preparation of this annual plan will be iterative. The plan will be kept as a 'live' document, uploaded to the NWIFCA website where it can be adapted and amended according to the development of the NWIFCA and changing events and priorities during the course of the year.
5. The plan will be used to inform the first Annual Report and the second Annual Plan for 2012-13. It will be modified to reflect required improvements in performance and performance against performance indicators. Successive plans should reflect the aim of continuous improvement by reviewing targets and including new working level objectives.

Members Appointed by Constituent Local Authorities	
Cllr G Coleman	Blackpool Borough Council
Cllr M Byram	Cheshire West and Chester Council
Cllr T Markley	Cumbria County Council (2)
Cllr AC (Cam) Ross	
Cllr T McInerney	Halton Borough Council
Cllr S Leadbetter	Lancashire County Council (2)
Cllr AH Thornton	
Cllr T Moore	Liverpool City Council
Cllr T Glover	Sefton Council
Cllr D Knowles	Wirral Metropolitan Council
MMO Appointees and their Affiliations	
Mrs J Butler	Commercial Fisherman
Ms J Clark	Other
Mr D Clarke	Commercial Fisherman
Mr B Crawford	Recreational
Mr B Darbyshire	Environment Agency
Mr G Ford-Keyte	Marine Management Organisation
Prof. C Frid	Marine
Mr R Graham	Commercial Fisherman
Mr M Hawkins	Marine
Mr T Jones	Commercial Fisherman
Mr R Langley	Commercial Fisherman
Mr C Lumb	Natural England
Mr A Maltby	Marine
Mrs K Walker (NE)	Marine
Mr J Murphy	Marine
Mr D Nixon	Recreational
Mrs M Owen	Commercial Fisherman
Mr M Porter	Commercial Fisherman
Mr C Woods	Commercial Fisherman
Ms Y Yadi	Marine

Table 1: List of Members: correct at 1-2-2011

Background to IFCA

6. The MACA proposes measures to modernise and strengthen SFC powers to manage inshore fisheries and the marine environment in England. SFC will be replaced by the 10 IFCA Districts (Fig. 2). IFCA will adopt the current SFC model that values local input to decision-making, provides an expert body to find practical solutions to complex inshore fisheries issues and delivers national policy at a local level. IFCA are designed to ensure balanced representation of local authorities, statutory agencies fishing, environmental, scientific and other stakeholder interests.

District and Membership of the NWIFCA

7. The NWIFCA is formed by merger of the NWSFC and Cumbria SFC. Thus the NWIFCA District (Fig. 1) extends in the south from the administrative boundary with Wales in the Dee Estuary (National Assembly for Wales (Transfer of Functions) Order 1999 (SI 1999/672)) to the administrative boundary with Scotland in the Solway Firth in the north (Scottish Adjacent Waters Boundaries Order 1999 (SI 1999/1126)) and from 0-6 miles from

the coast (baseline waters). The District encompasses the total landward area of the constituent local authorities.

8. The NWIFCA consists of 30 members (table 1). Ten are representatives of the funding local authorities; Seventeen MMO appointees are appointed by open competition to create a balanced membership of stakeholder interests and there are three agency members from Environment Agency (EA) and Natural England (NE) and MMO.

Duties of the NWIFCA

9. The NWIFCA is the relevant body for the regulation of inshore sea fisheries within its District and has a range of duties defined in the Marine Act (see text box) including ensuring the sustainable exploitation of sea fisheries resources and protection of the marine environment from sea fishing within its District.

MACA clause 153: Duties of IFCA

Management of Inshore Fisheries

1. *The authority for an IFC district must manage the exploitation of sea fisheries resources in that district.*
2. *In performing its duty under subsection (1), the authority for an IFC district must:*
 - (a) seek to ensure that the exploitation of sea fisheries resources is carried out in a sustainable way;*
 - (b) seek to balance the social and economic benefits of exploiting the sea fisheries resources of the district with the need to protect the marine environment from, or promote its recovery from, the effects of such exploitation;*
 - (c) take any other steps which in the authority's opinion are necessary or expedient for the purpose of making a contribution to the achievement of sustainable development; and*
 - (d) seek to balance the different needs of persons engaged in the exploitation of sea fisheries resources in the district.*

The NWIFCA powers and functions October 2010-March 2011

10. The NWIFCA was vested on 1 October 2010 with limited powers (SI2010, No. 2200) to set a budget for 2011-12 and prepare the first annual plan. The inaugural meeting (2nd November 2010):
 - I. appointed Chairman and Vice Chairman to serve until the first meeting after 1 April 2011.
 - II. Agreed draft standing orders subject to consultation.
 - III. Agreed Draft MOU with NE, EA and MMO subject to consultation.
 - IV. Appointed a finance subcommittee: first meeting 25 Jan to consider budget and levies 2011-12
 - V. Agreed a second meeting 8th February 2011 and third meeting 17 May 2011.
11. The Finance Subcommittee met on 25 January. The budget for 2011-12 was agreed.

Evaluation and Monitoring framework

12. The duties in the MACA form the basis on which an IFCA vision together with a suite of success criteria and high level objectives have been developed by Defra in an attempt to encapsulate the core role of the new organisation and formulate an evaluation and monitoring framework (fig 3).

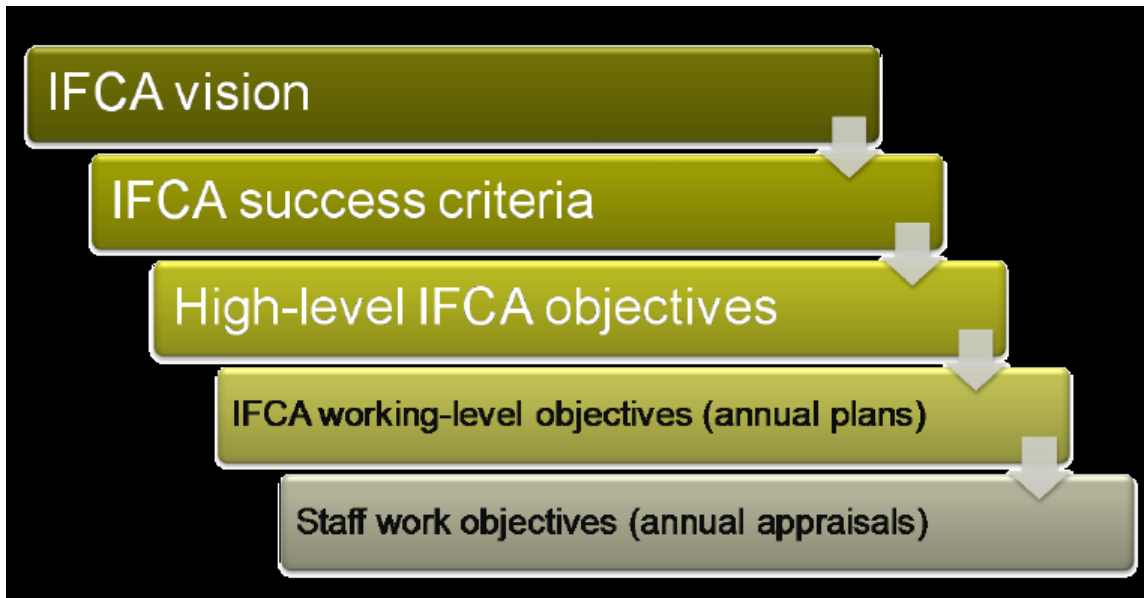


Fig. 3. IFCA Evaluation and Monitoring of IFCA.

The Vision statement for IFCA is:

to lead, champion and manage a sustainable marine environment and inshore fisheries in its District by successfully securing the right balance between social, environmental and economic benefits to ensure healthy seas, sustainable fisheries and a viable industry.

13. Defra guidance sets out the success criteria, high level objectives, desired outcomes, and performance indicators to be used to evaluate IFCA performance. These targets are common to all IFCA and should be reviewed and updated as necessary at a national level in consultation with Government. The suite of objectives and indicators are designed to cover the period to April 2015, when the first of the Secretary of State's reports into the operation of the NWIFCA (and all IFCA) will be laid before Parliament.
14. Every four years from the date when the first Order creating an IFC district came into force the Secretary of State must lay a report before Parliament about the conduct and operation of the IFCA in that period. Achievement against these success criteria will be one of the main influences on the first report.