

STOP THE SPREAD

Are you unknowingly spreading invasive species on your water sports equipment and clothing?



CHECK

Check your equipment and clothing for live organisms - particularly in areas that are damp or hard to inspect.

CLEAN

Clean and wash all equipment, footwear and clothing thoroughly.

If you do come across any organisms, leave them at the water body where you found them.

DRY

Dry all equipment and clothing - some species can live for many days in moist conditions.

Make sure you don't transfer water elsewhere.

www.nonnativespecies.org



© Crown Copyright 2009 FERA

Have you seen a Chinese mitten crab?

- Grey-green to dark brown in colour
- Long walking legs
- Square body, up to 8cm across
- Dense brown fur on white-tipped claws
- 4+4+4 pattern of teeth around the front of the shell with notch between eyes
- Juveniles may lack fur on claws



© Crown Copyrights 2009 FERA

Please Report Sightings to:

science@nw-ifca.gov.uk

01524 727 970

Please take photos, log where found, and retain any crabs in a sealed container for further identification.

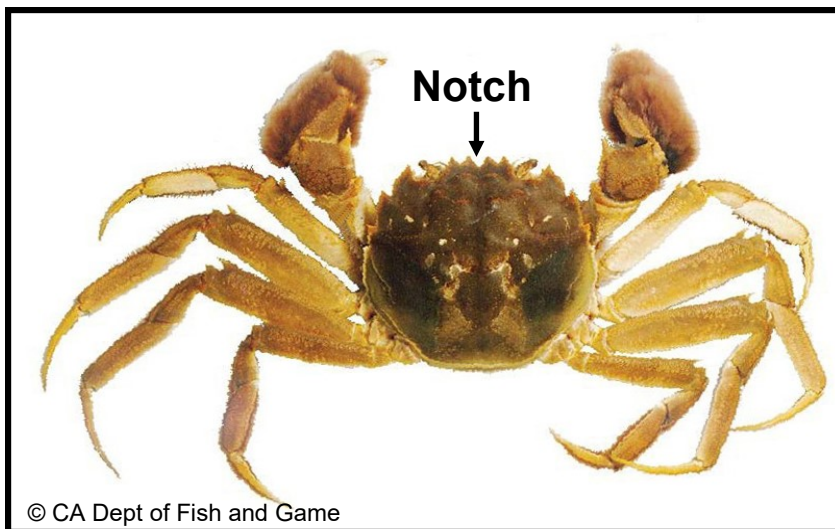


For more information on invasive non-native species and disease in the marine area you can find the **NWIFCA Biosecurity Plan** at www.nw-ifca.gov.uk

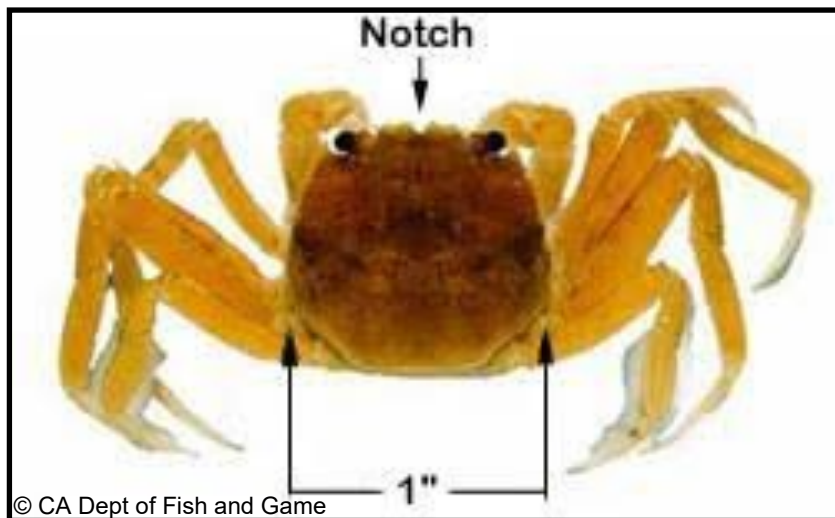
or visit www.nonnativespecies.org/checkcleandry

Produced by the NWIFCA October 2018

Adult Chinese mitten crab-Non-native



Juvenile Chinese mitten crab-Non-native



Threat

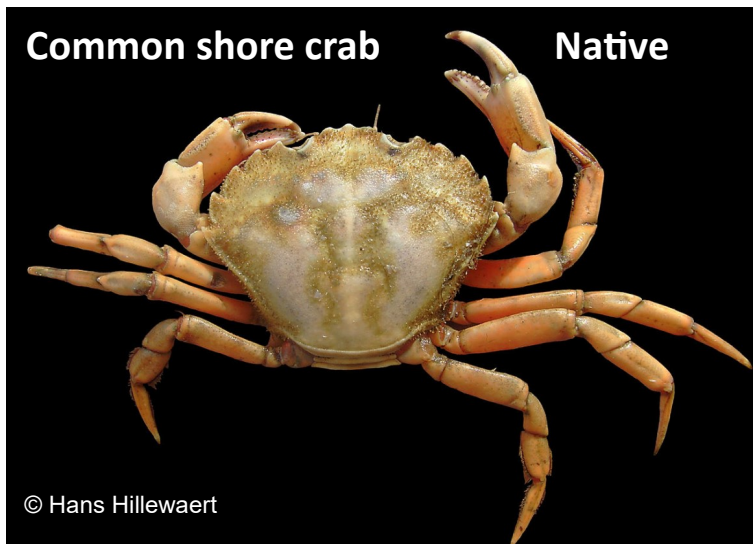
It's crucial that we prevent the spread of Chinese mitten crab in the north-west. Chinese mitten crab threatens native animals by predation and disturbance. They burrow and large-scale invasions could result in the erosion of river banks. They can live in fresh water, can walk across land, and migrate over 700km upstream from the sea. They are most likely to be found along the banks of estuaries and rivers as well as along the coast.

Other Species

The Chinese mitten crab can be confused with the native shore crab or the broad-clawed porcelain crab (shown in the bottom two images). Look for the notch between the eyes to tell them apart (shown on the top two images). If you think you have found a Chinese mitten crab please take pictures of it and, if possible, keep it for further identification by NWIFCA staff, noting exactly where you found it.

Common shore crab

Native



Broad-clawed porcelain crab-Native

