



SEA BASS FISHERIES CONSERVATION UK (2018-2020)



PROJECT BACKGROUND

Sea Bass Fisheries Conservation UK (SBFC UK) is a two-year European Maritime Fisheries Funded (EMFF) project led by the Centre for Environment, Fisheries and Aquaculture Science (Cefas) committed to promoting long-term sustainable bass fisheries in the UK. Working closely with regional Inshore Fisheries Conservation Authorities (IFCAs), Cefas will coordinate a series of **open stakeholder workshops** to establish **regional fisher-led data collection** surveys and **collaborations** to **gather knowledge of regional and seasonal movements and distribution of bass** throughout their life stages (juvenile, maturing and adult fish).

WORKSHOP DATES

SOUTH WEST

25th Sept

10am – 4pm

**ROYAL PLYMOUTH
CORINTHIAN YACHT CLUB
PLYMOUTH, PL1 2NY**

NORTH WEST

27th Sept

10am – 4pm

**ROYAL STATION HOTEL
CARNFORTH, LA5 9BT**

ESSEX

1st Oct

10am – 4pm

**EWT NAZE CENTRE
WALTON-ON-THE-NAZE, CO14
8LE**

EASTERN

2nd Oct

10am – 4pm

**THE VICTORIA HOTEL
LOWESTOFT, NR33 0BZ**

REGIONAL WORKSHOPS

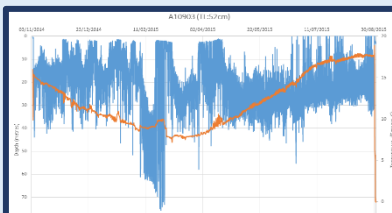
The project aims to create two regional bass stakeholder partnerships within established **west coast** and emerging **east coast** UK bass fisheries, to **share and develop current knowledge** and to explore **priority areas for data collection** to **promote long-term sustainable UK bass fisheries**. In each workshop, Cefas scientists will present the latest **scientific research** for seasonal bass movements and behaviour, followed by **open-floor discussions on current regional bass fisheries** to help initiate **commercial and recreational fisher-led data collection** and **mark ID tag training opportunities**.



GET INVOLVED...

To participate in one of our workshops, simply email us: your name, contact details, interest in workshop, region you wish to attend and dietary requirements to: sbfc@cefass.co.uk. All participants will receive a free delegate pack together with tea/coffee and buffet lunch.

We look forward to meeting you!



Above: Example of fine-scale depth & temperature profile from a returned seabass implanted with an electronic tag.

For more information email us your details to sbfc@cefass.co.uk to be added to the mailing list or follow us on Twitter [@CefasGovUK](https://twitter.com/CefasGovUK)

Our collaborative partners:



Centre for Environment
Fisheries & Aquaculture
Science



Department
for Environment
Food & Rural Affairs



NEW
ECONOMICS
FOUNDATION



PRIFYSGOL
BANGOR
UNIVERSITY



University
of Essex



THE
wildlife
TRUSTS
ESSEX
Wildlife Trust



Isle of Man
Government