

**NWIFCA Technical, Science and Byelaw  
Sub-Committee  
11<sup>th</sup> August 2015: 10:00 a.m.**

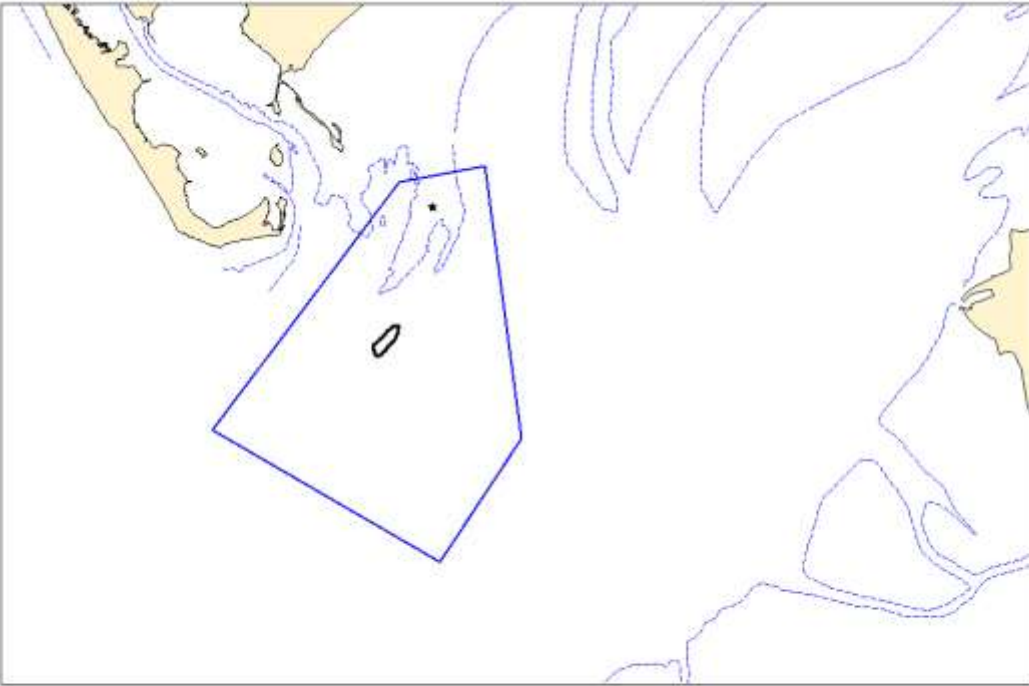
**AGENDA  
ITEM NO.  
7**

**REQUEST FROM DREDGE INDUSTRY TO HARVEST SMALL AREA OF SEED MUSSEL  
IN NORTH MORECAMBE BAY**

**Recommendation: Members approve the use of Officer delegated powers to open a limited seed mussel dredge fishery in the Falklands / South America area of Morecambe Bay.**

**Background**

1. Kim Mould (North Wales mussel company Myti-mussel) emailed science team on 6<sup>th</sup> August requesting authorisation to harvest what he described as 'the small quantity that may be available in the old order area'. Kim indicated he would attend TSB to discuss this further. At that time Officers did not have information on the area or stock levels in question.
2. At the TSB on 11<sup>th</sup> August, TSB member Trevor Jones provided mapping of tracks and photographs of stock recorded on 2<sup>nd</sup> August, when he inspected the area by hovercraft.
3. The track was mapped by Science team using MapInfo software to generate the image attached. This shows a small area where seed mussel is reported in Morecambe Bay covering an area estimated at 19.65ha. The area is within the old 1978 dredge mussel Fishery Order and lies within the southern extent of the Falklands/ South America area, well offshore and away from intertidal areas. It is not accessible from land as shown by Ms Knott and Mr Deary on previous attempt to reach the southern areas on quad bike.
4. Officers consider that carrying out an HRA with the view to opening this area as a limited dredge fishery is appropriate, and recommend approval to use delegated powers to further this work. If the HRA is straightforward and approved by Natural England, it may be possible to open this fishery by 1<sup>st</sup> September.
5. If you have any questions or concerns about this proposal please contact Senior Scientist Mandy Knott.



**Morecambe Bay Seed Mussel Dredge Fishery 2015. Proposed fishery area shown as black polygon and estimated at 19.65ha within the Falkands area. Blue lines show boundary of old 1978 Dredge Fishery Order boundaries.**